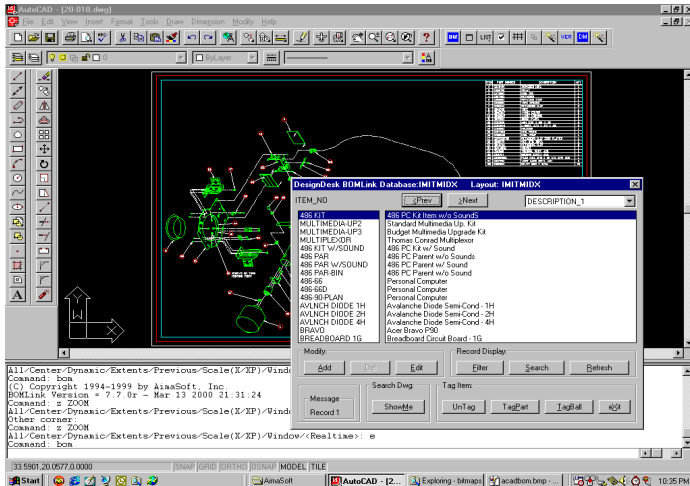


On the design side, a drawing assembly is incomplete without the BOM. On the manufacturing side, a bill of materials without the associations of the drawings involved is half as complete. Most engineered to order/MTO manufacturers have struggled to manually synchronize the engineering BOM with the manufacturing BOM. The problems are magnified when the assemblies are revised. Typical problems include triple entry of part data and BOM data, typos, missing part information, mistyped part numbers, incorrect bills, improperly referenced balloons on drawings and inaccuracies in general, that costs manufacturers millions in lost productivity.



BOMLink Drag And Drop Item Interface to Macola

BOMLink™ will do away with retyping the same bill of materials data several times. Whenever a parts list is generated inside of AutoCAD™, it can be automatically exported as text or directly into Macola's Inventory and Bill of Material database files.

BOMLink provides AutoCAD users the ability to drag and drop parts from **BOMLink's** Macola Item Master browse window directly into an AutoCAD drawing. The AutoCAD user is then able to automatically create a Bill of Materials and cut lists from the information contained in the AutoCAD drawing and the Macola Inventory Record. The AutoCAD drawing and the Inventory Record now have a permanent bi-directional link, making the drawing entities 'intelligent'. The Macola Bill of Materials now accurately

represents the information contained both in the Item Master File and the CAD drawing.

BOMLink's Intuitive Procedure

BOMLink's intuitive procedure solves the problem using the following simple steps:

1. From within the CAD system, the User browses through the Macola Inventory file like an online catalog of company specific parts. User searches, filters & locates Macola Inventory items (both purchased & fabricated) needed for a new/existing assembly within the CAD system
2. He then tags these parts on to a new drawing or an existing .DWG
3. After verifying the parts used in drawing, he clicks "Generate BOM". A fully customizable BOM table that contains the Macola Inventory item data and User-defined data (variable such as quantity) appears on the drawing.
4. He can update this BOM using modified Macola Inventory item data or User-defined data such as quantity.
5. He can update the part information on any part directly within the CAD system
6. He can add/delete parts from this BOM
7. He can also add new parts if not found in Macola and delete or update existing parts

Release CAD Drawings Fast

BOMLink breaks through the information bottleneck! It's not unusual for AutoCAD users to spend 40 percent or more of their time collecting and verifying part data, and creating bill of materials. Now, a two day job can be done in minutes. With BOMLink it is no longer necessary to count the quantity of items, place item call-out bubbles, measure lengths, or create tables.

Increase Accuracy

Engineers will never again have to "eyeball" multiple drawings to make sure that purchased and fabricated parts have been accurately described and accounted for. BOMLink automatically tracks piece part data across multiple assembly drawings.

With BOMLink it is simple to

- Create and maintain an accurate materials list.
- Generate listings of fabricated parts, piece parts and purchased parts.
- Maintain custom table layouts from inside of AutoCAD.
- Associate non-graphical data to any entities in AutoCAD drawings.
- Output tables, parts schedules, inventory and cut lists from drawings, including nested blocks and Xrefs

Update existing tables after revisions or part specification changes in the centralized database.

BOMLink is available for AutoCAD R14 and 2000 for Windows 95, 98, NT, and 2000 for Progression V7.5 and newer.

More Information

For more information on how to put the power of BOMLink to work in your operation, call AimaSoft today, toll-free in the U.S. and Canada:

800.473.7638

(International: 415.453.2063)

or call your Authorized Macola Reseller/Consultant directly. For the name of a local Reseller/Consultant, Call:

800.468.0834

(International: 740.382.5999)

MACOLA[®]
SOFTWARE

333 E. Center
P.O. Box 1824
Marion, OH 43301-1824

sales: 800.468.0834
tel: 740.382.5999
fax: 740.382.0293
<http://www.macola.com>

Manufacturing
Planning and
Control Suite